

# Overexpression of CALNUC (Nucleobindin) Increases Agonist and Thapsigargin Releasable $\text{Ca}^{2+}$ Storage in the Golgi

Ping Lin,\* Yong Yao,† Robert Hofmeister,\* Roger Y. Tsien,‡§ and Marilyn Gist Farquhar\*||

\*Division of Cellular and Molecular Medicine, ||Department of Pathology, †Department of Pharmacology, and §Howard Hughes Medical Institute, University of California San Diego, La Jolla, California 92093-0651

**Abstract.** We previously demonstrated that CALNUC, a  $\text{Ca}^{2+}$ -binding protein with two EF-hands, is the major  $\text{Ca}^{2+}$ -binding protein in the Golgi by  $^{45}\text{Ca}^{2+}$  overlay (Lin, P., H. Le-Niculescu, R. Hofmeister, J.M. McCaffery, M. Jin, H. Henneman, T. McQuistan, L. De Vries, and M. Farquhar. 1998. *J. Cell Biol.* 141:1515–1527). In this study we investigated CALNUC's properties and the Golgi  $\text{Ca}^{2+}$  storage pool in vivo. CALNUC was found to be a highly abundant Golgi protein (3.8  $\mu\text{g}$  CALNUC/mg Golgi protein,  $2.5 \times 10^5$  CALNUC molecules/NRK cell) and to have a single high affinity, low capacity  $\text{Ca}^{2+}$ -binding site ( $K_d = 6.6 \mu\text{M}$ , binding capacity = 1.1  $\mu\text{mol Ca}^{2+}/\mu\text{mol CALNUC}$ ).  $^{45}\text{Ca}^{2+}$  storage was increased by 2.5- and 3-fold, respectively, in HeLa cells transiently overexpressing CALNUC-GFP and in EcR-CHO cells stably overexpressing CALNUC. Deletion of the first EF-hand  $\alpha$  helix from CALNUC completely abolished its  $\text{Ca}^{2+}$ -binding capability. CALNUC was correctly targeted to the Golgi in trans-

fect cells as it colocalized and cosedimented with the Golgi marker,  $\alpha$ -mannosidase II (Man II). Approximately 70% of the  $^{45}\text{Ca}^{2+}$  taken up by HeLa and CHO cells overexpressing CALNUC was released by treatment with thapsigargin, a sarcoplasmic/endoplasmic reticulum calcium ATPase (SERCA) ( $\text{Ca}^{2+}$  pump) blocker. Stimulation of transfected cells with the agonist ATP or  $\text{IP}_3$  alone (permeabilized cells) also resulted in a significant increase in  $\text{Ca}^{2+}$  release from Golgi stores. By immunofluorescence, the  $\text{IP}_3$  receptor type 1 ( $\text{IP}_3\text{R-1}$ ) was distributed over the endoplasmic reticulum and codistributed with CALNUC in the Golgi. These results provide direct evidence that CALNUC binds  $\text{Ca}^{2+}$  in vivo and together with SERCA and  $\text{IP}_3\text{R}$  is involved in establishment of the agonist-mobilizable Golgi  $\text{Ca}^{2+}$  store.

**Key words:** Golgi resident calcium-binding protein • EF-hand •  $\text{IP}_3$  receptor • SERCA • nucleobindin

THE Golgi complex is involved in posttranslational modification of newly synthesized proteins and serves as the main sorting station for protein and vesicular traffic (Farquhar and Hauri, 1997; Farquhar and Palade, 1998). Calcium is well known to be essential for cell signaling (Tsien and Tsien, 1990; Meldolesi and Pozzan, 1998) but also for cell processes such as protein processing and membrane traffic to and through the Golgi (Davidson et al., 1988; Ivessa et al., 1995; Duncan and Burgoyne, 1996). Recently the Golgi has been identified as a  $\text{Ca}^{2+}$ -enriched compartment using ion microscopy and electron energy loss spectroscopy-electron spectroscopic imaging (EELS-ESI) (Chandra et al., 1991; Grohovaz et al., 1996; Pezzati et al., 1997).  $\text{Ca}^{2+}$  can be released from the Golgi by the  $\text{Ca}^{2+}$  ionophore A23187 (Chandra et al.,

1991), the  $\text{Ca}^{2+}$  channel blocker  $\text{La}^{3+}$  (Zha and Morrison, 1995), and histamine, an agonist known to be coupled to  $\text{IP}_3$  generation (Pinton et al., 1998). How the high level of  $\text{Ca}^{2+}$  in the Golgi is maintained is unknown at present.

The ER  $\text{Ca}^{2+}$  pool (or  $\text{Ca}^{2+}$  store) has been studied more extensively and is known to be maintained by organelle-associated  $\text{Ca}^{2+}$  ATPase ( $\text{Ca}^{2+}$  pumps) and luminal  $\text{Ca}^{2+}$ -binding proteins of which there are many (Bastianutto et al., 1995; Meldolesi and Pozzan, 1998). There is also evidence for the existence of  $\text{Ca}^{2+}$  pumps on the Golgi based on ATP-dependent  $\text{Ca}^{2+}$  uptake into mammalian (Baumrucker and Keenan, 1975; Hodson, 1978; Neville et al., 1981; Virk et al., 1985) and yeast (Sorin et al., 1997) Golgi fractions. Both sarcoplasmic/ER calcium ATPase (SERCA)<sup>1</sup> and plasma membrane calcium ATPase

Address correspondence to Marilyn G. Farquhar, Ph.D., Division of Cellular and Molecular Medicine, University of California San Diego, 9500 Gilman Drive, La Jolla, CA 92093-0651. Tel.: (619) 534-7711. Fax: (619) 534-8549. E-mail: mfarquhar@ucsd.edu

1. *Abbreviations used in this paper:* CaM, calmodulin; CRT, calreticulin; GFP, green fluorescent protein;  $\text{IP}_3\text{R}$ , inositol 1, 4, 5 trisphosphate receptor; Man II,  $\alpha$ -mannosidase II; PLC, phospholipase C; SERCA, sarcoplasmic/ER calcium ATPase; Tg, thapsigargin.

en route to the plasma membrane are essential for  $\text{Ca}^{2+}$  uptake into isolated Golgi fractions (Taylor et al., 1997). However, information on Golgi calcium-binding proteins is still limited and the detailed mechanisms of  $\text{Ca}^{2+}$  uptake, storage, and release from the Golgi apparatus remain to be elucidated. Previously, we demonstrated that CALNUC (nucleobindin) (Miura et al., 1992; Wendel et al., 1995), a Golgi resident protein that faces the Golgi lumen, is the major  $\text{Ca}^{2+}$ -binding protein in the Golgi based on  $^{45}\text{Ca}^{2+}$  overlay (Lin et al., 1998).

In this study we have investigated the role of CALNUC in establishing the Golgi  $\text{Ca}^{2+}$  pool in vivo by examining the effects of overexpression of CALNUC on  $\text{Ca}^{2+}$  uptake. We provide direct evidence that CALNUC possesses high affinity/low capacity  $\text{Ca}^{2+}$  binding properties and binds  $\text{Ca}^{2+}$  in the Golgi in vivo. The finding that the majority of the  $\text{Ca}^{2+}$  sequestered by overexpressed CALNUC is released by thapsigargin (Tg), ATP, and  $\text{IP}_3$  provides additional in vivo evidence for the existence of SERCA and inositol 1, 4, 5 trisphosphate receptor ( $\text{IP}_3\text{R}$ ) on the Golgi. CALNUC together with SERCA and  $\text{IP}_3\text{R}$  on Golgi membranes constitute a cellular  $\text{Ca}^{2+}$  pool in the Golgi which may have distinct functions.

## Materials and Methods

### Materials

Polyclonal antibody (F-5059) against full-length, recombinant CALNUC was generated and affinity purified as previously described (Lin et al., 1998). Polyclonal anti- $\alpha$ -mannosidase II (Man II) was prepared as described (Velasco et al., 1993). Monoclonal anti-Man II (53FC3) and polyclonal antibody against denatured Man II were gifts from Drs. B. Burke (University of Alberta, Alberta, Canada) and K. Moremen (University of Georgia, Athens, GA), respectively. Monoclonal anti-mouse  $\text{IP}_3\text{R}$ -1 (18A10) was kindly provided by Drs. A. Miyawaki and K. Mikoshiba (University of Tokyo, Tokyo, Japan) (Furuichi et al., 1989). Polyclonal antibody against calnexin was a gift from Dr. J.J.M. Bergeron (McGill University, Montreal, Canada). Cross-adsorbed Texas red-conjugated donkey anti-rabbit F(ab')<sub>2</sub> was obtained from Jackson ImmunoResearch Laboratories, and affinity-purified goat anti-rabbit IgG (H+L) conjugated to HRP was from Bio-Rad.  $^{45}\text{CaCl}_2$  was obtained from NEN Life Science Products. Supersignal chemiluminescent reagent was purchased from Pierce. All chemical reagents were from Sigma Chemical Co. except as indicated.

### Preparation and Purification of His6-CALNUC

Full-length CALNUC cDNA was amplified by PCR using 5'-CGCGCGGCAGCCATATGCCTACCTCTGTG-3' and 5'-CGGAATTCGGATCCTTATAAATGCTGAGAATC-3' as primers. PCR was carried out using 100 pmol of each primer, 2 ng CALNUC cDNA, 200  $\mu\text{M}$  dNTP, 2.5 U PFU polymerase (Stratagene), and PCR reaction buffer in a total volume of 50  $\mu\text{l}$ . PCR products were purified using a QIAquick PCR Purification kit (Qiagen) and subcloned into the pET-28a(+) vector (Novagen) at BamHI/NdeI restriction sites, followed by transformation into *Escherichia coli* BL21(DE3). Expression of CALNUC protein was induced with 1 mM isopropyl  $\beta$ -D-thiogalactoside (IPTG) (Pharmacia Biotech) at 18°C for 4 h at a bacterial density of  $\text{OD}_{600} \geq 1.0$ .

To purify His6-CALNUC protein, transformed *E. coli* were suspended in binding buffer containing 20 mM sodium phosphate and 500 mM NaCl (pH 7.5), and sonicated using a Microson Ultrasonic Cell Disrupter (Heat Systems). Lysates were incubated with Ni-NTA agarose (Qiagen), washed with 20 mM sodium phosphate, 500 mM NaCl at decreasing pH (8.0, 6.0, and 5.3), and bound proteins were sequentially eluted with an imidazole step gradient (10 mM to 1 M). Fractions containing a single band of purified CALNUC detected by silver staining were pooled and dialyzed against TBS containing 150 mM NaCl and 10 mM Tris-HCl (pH 7.4) at 4°C, and subsequently concentrated using an Ultrafree-15 (Biomax-50K)

filter (Millipore). Highly purified His6-CALNUC [0.6 mg/liter of transformed BL21(DE3)] was obtained.

### $\text{Ca}^{2+}$ -binding Analysis

Equilibrium dialysis was performed essentially as previously published (MacLennan and Wong, 1971; Baksh and Michalak, 1991).  $\text{Ca}^{2+}$ -free solution was prepared by treatment of deionized water with a UniPure I Water Purification System (Solution Consultants) and Chelex 100 ion exchange resin (Bio-Rad) (Thielens et al., 1990). Equilibrium dialysis was performed using a Dialysis System (GIBCO BRL). 0.25 mg  $\text{Ca}^{2+}$ -depleted CALNUC (Thielens et al., 1990) was incubated with 0.35  $\mu\text{Ci/ml}$   $^{45}\text{CaCl}_2$  and different concentrations of cold  $\text{Ca}^{2+}$  at 4°C for 16 h, followed by assessment of radioactivity using a LS 6000IC Liquid Scintillation System (Beckman Instruments) in EcoLume liquid scintillation cocktail (ICN). Scatchard analysis was performed using CA Cricket Graph III software (Computer Associates International).

### Primary Structure Comparison

Amino acid sequences of CALNUC, Cab45 (Scherer et al., 1996), and calmodulin (CaM) were obtained through Entrez on the National Center for Biotechnology Information's (NCBI) World Wide Web home page. Alignment of EF-hand motifs was performed using MacVector 6.0 software (Oxford Molecular Groups-IBI).

### Cell Culture

HeLa cells were maintained in DME high glucose medium (Irvine Scientific) supplemented with 10% FCS (Life Technologies Inc.). Cells were used as 80% confluent monolayers for transfection. Transfected EcR-CHO cells were cultured in Ham's F12 medium (CORE Cell Culture Facility, University of California, San Diego, CA) with 10% FCS (Life Technologies), 250  $\mu\text{g/ml}$  Zeocin (Invitrogen), and 750  $\mu\text{g/ml}$  G418 sulfate (Calbiochem). All media contained 100 U/ml of penicillin G and 100  $\mu\text{g/ml}$  of streptomycin sulfate. NRK cells were cultured as previously described (Lin et al., 1998).

### Transient Overexpression of CALNUC-Green Fluorescent Protein (GFP) or Truncated CALNUC-GFP in HeLa Cells

CALNUC cDNA was amplified by PCR with the primers 5'-CGCGGATCCATGCTACCTCTGTG-3' and 5'-CCATGCCATGGCTAAA-TGCTGAGAATCC-3'. GFP cDNA was also amplified by PCR with the primers 5'-TCATGCCATGGTGTAGCAAGGG-3' and 5'-ATAGTTA-GCGGCCGCTTACTTGTACAGCTC-3'. PCR products were purified and digested, respectively, with BamHI, NcoI, and NotI (New England Biolabs). CALNUC and GFP cDNA were subcloned into the pcDNA3 vector (Invitrogen) by three-fragment ligation to obtain a CALNUC-GFP/pcDNA3 construct with GFP ligated to the 3' (COOH terminus) of CALNUC.

CALNUC( $\Delta\text{EF}$ -1), in which the  $\alpha$  helix (Asp<sub>227</sub>-Leu<sub>230</sub>) of the first EF-hand (EF-1) domain (see Fig. 1) was deleted, was obtained by PCR with the primers 5'-CGCGGATCCATGCTACCTCTGTG-3'/5'-CCCAAGCTTATGCAAGAA-3', and 5'-CCCAAGCTTGAAGCTCTGTTTACC-3'/5'-CCATGCCATGGCTAAAATGCTGAGAATCC-3'. CALNUC( $\Delta\text{EF}$ s-1,2), in which both EF-1 and EF-2 domains (Asp<sub>227</sub>-Phe<sub>291</sub>) (see Fig. 1) were deleted, was prepared with primers of 5'-CGCGGATCCATGCTACCTCTGTG-3'/5'-CCCAAGCTTATGCAAGAA-3', and 5'-CCCAAGCTTCTGGCATCCACACAG-3'/5'-CCATGCCATGGCTAAAATGCTGAGAATCC-3'. CALNUC mutants and the GFP tag were subcloned into the pcDNA3 vector by four-fragment ligation with HindIII and NcoI as internal restriction linker sites. Fidelity of the constructs was verified by automated DNA sequencing (CFAR, University of California, San Diego, CA). cDNA constructs were transformed into *E. coli* DH5 $\alpha$ , followed by extraction and purification using QIAGEN Plasmid Midi/Mega Kits (Qiagen) and UltraPure CsCl (optical grade) (GIBCO BRL).

To express wild-type or truncated CALNUC-GFP in HeLa cells, 1  $\mu\text{g}$  purified DNA was transfected into HeLa cells (33-mm dish, 80% confluence) using 6  $\mu\text{g}$  lipofectamine (GIBCO BRL). Transfected cells were grown in serum and antibiotic-free high glucose DME medium for 5 h followed by replacement with regular culture medium.

## Establishment of a Stable HeLa Cell Line Overexpressing GFP Using Flow Cytometry

GFP cDNA amplified by PCR with the primers 5'-TCGCGGATCCA-TGGTGAGCAAGGG-3' and 5'-ATAGTTTACGCGCCGCTTACTT-GTACAGCTC-3' was subcloned into the pcDNA3 vector at BamHI/NotI restriction sites, followed by transfection into HeLa cells as described above and G418 selection (0.75 mg/ml) for 4 d. Cells expressing GFP were sorted by flow cytometry (Ex/Em: 488/530 ± 15) (FACStar Plus®; Becton Dickinson) in the UCSD Flow Cytometry Core Facility. The top 0.12% of the positive cells was collected and maintained in media containing 0.75 mg/ml G418 until confluent. Selection by sorting was repeated three times until 100% of the cells (HeLa-GFP, GPH-1216) expressed GFP (data not shown).

## Establishment of Stable Cell Lines Overexpressing CALNUC in the Ecdysone-inducible Mammalian Expression System

CALNUC cDNA was amplified by PCR and subcloned into the pIND vector (Invitrogen) at BamHI/NotI restriction sites. EcR-CHO cells (Invitrogen) stably expressing the ecdysone receptor (RxR and VgEcR) were transfected with CALNUC/pIND plasmid DNA using lipofectamine as described above followed by selection for G418 resistance (0.4 mg/ml) for 18 d. Cells were split into 96-well plates by serial dilution, 0.5 cells/well, and subsequently reselected with G418 (0.75 mg/ml). Four clones overexpressing CALNUC after induction with muristerone A (Invitrogen) were obtained; one of these, EcR-CHO-CALNUC-1 (CPC-22A), was used for these experiments.

## Immunocytochemistry

CALNUC-GFP was directly visualized using a Zeiss Axiophot microscope and an FITC-filter (Ex/Em: 485/510). For immunofluorescence, cells on coverslips were fixed with 2% paraformaldehyde (50 min), permeabilized with 0.1% Triton X-100 (10 min), and incubated with affinity-purified anti-CALNUC IgG (6 µg/ml), anti-Man II serum (1:300), or anticalnexin serum (1:100) as previously described (Lin et al., 1998). Detection was with Texas red- or FITC-conjugated donkey anti-rabbit F(ab')<sub>2</sub>. In some cases cells were doubly stained for CALNUC and either a mouse mAb against Man II (40 µg/ml) or the IP<sub>3</sub>R-1 (1.25 µg/ml) and appropriate secondary antibodies. Specimens were examined with either a Zeiss Axiophot equipped for epifluorescence or a Bio-Rad confocal microscope (MRC 1024) equipped with Lasersharp 3.1 software (Bio-Rad) and a krypton-argon laser. Images were processed with Scion Image and Adobe Photoshop (Adobe Systems) software.

## Subcellular Fractionation

Sucrose gradient flotation of Golgi fractions was carried out using a protocol similar to those previously published (Fries and Rothman, 1980; Brown and Farquhar, 1987) with minor modifications. In brief, microsomal membranes were resuspended in 1.5 ml 55% sucrose (wt/wt), loaded at the bottom of a sucrose step gradient consisting of 40, 35, 30, 25, and 20% (wt/wt in 1 mM Tris-HCl, pH 7.5), and centrifuged at 85,500 g for 16 h at 4°C using a SW-40Ti rotor (Beckman). 20 fractions were collected from the bottom, followed by SDS-PAGE and immunoblotting for calnexin (an ER marker), Man II (a Golgi marker), and CALNUC.

Rat liver Golgi fractions, membrane (100,000 g pellet) and cytosolic (100,000 g supernatant) fractions were prepared from postnuclear supernatants of transfected HeLa or EcR-CHO-CALNUC cells as previously described (Saucan and Palade, 1994; Jin et al., 1996; Lin et al., 1998).

## Immunoblotting and SDS-PAGE

Proteins were separated by 5 or 10% SDS-PAGE, transferred to PVDF membranes, and immunoblotted with affinity-purified anti-CALNUC IgG, anticalnexin, and anti-Man II serum followed by HRP-conjugated anti-rabbit IgG and detection by ECL (Lin et al., 1998).

## <sup>45</sup>Ca<sup>2+</sup> Equilibrium Uptake and Release

The procedures followed were those reported previously (Bastianutto et al., 1995). Cells (2 × 10<sup>6</sup>) transfected with CALNUC-GFP or GFP alone were incubated with <sup>45</sup>Ca<sup>2+</sup> (2 µCi/ml) for 48 h to reach <sup>45</sup>Ca<sup>2+</sup> equilibrium after

which they were washed three times in Krebs-Ringer-Hepes (KRH) buffer (125 mM NaCl, 5 mM KCl, 1.2 mM KH<sub>2</sub>PO<sub>4</sub>, 1.2 mM MgSO<sub>4</sub>, 2 mM CaCl<sub>2</sub>, 6 mM glucose, and 25 mM Hepes, pH 7.4) and five times with PBS. <sup>45</sup>Ca<sup>2+</sup> was extracted with 0.1 N HCl (30 min at room temperature) and radioactivity assessed as described above. To examine <sup>45</sup>Ca<sup>2+</sup> release after stimulation, washed cells were resuspended in KRH supplemented with 3 mM EGTA and stimulated at room temperature with 100 µM ATP or sequentially stimulated with 0.1 µM Tg, 2 µM ionomycin, and 2 µM monensin, 5 min each. Equal aliquots (10<sup>6</sup> cells) were collected after each stimulation, followed by centrifugation at 14,000 rpm (30 s) and quantification of <sup>45</sup>Ca<sup>2+</sup> in the supernatant.

## Ca<sup>2+</sup> Imaging

Noninduced or induced EcR-CHO-CALNUC cells were loaded with 1 mM Fura-2 AM (Molecular Probes Inc.) in Ham's F12 medium/0.5% FCS at 22°C for 1 h, washed with Ca<sup>2+</sup>-free HBSS (Irvine Scientific) followed by addition of 100 µM ATP. Ca<sup>2+</sup> release was monitored by Ca<sup>2+</sup> imaging performed on a Zeiss Axiophot microscope equipped with a cooled charge-coupled CCD camera (Photometrics) and MetaFluor software (Universal Imaging). Dual-excitation ratio imaging was obtained using two excitation filters (340DF20 and 380DF20) (Omega Optical and Chroma Technology) mounted on a filter wheel (Lambda 10-2; Sutter Instruments), a 420DRLP dichroic mirror, and a 510DF80 emission filter.

## Assessment and Mobilization of Stored Ca<sup>2+</sup> by IP<sub>3</sub> in Permeabilized Cells

The procedures used were basically similar to those published (Berridge et al., 1984; De Smedt et al., 1997) with minor modifications. To examine equilibrium <sup>45</sup>Ca<sup>2+</sup> uptake, EcR-CHO-CALNUC cells induced with 5 µM ponasterone A for 24 h in a 6-well culture plate (10<sup>6</sup> cells/well) were permeabilized at 20°C for 4 min with saponin (50 µg/ml) in loading buffer (140 mM KCl, 20 mM NaCl, 2 mM MgCl<sub>2</sub>, 2 mM ATP, 0.1 mM EGTA, 20 mM Pipes, pH 6.80), and 0.13 µM free Ca<sup>2+</sup> calculated for conditions of pH 6.80, at 20°C (Tsien and Pozzan, 1989). Cells were washed four times with loading buffer and subsequently loaded with <sup>45</sup>Ca<sup>2+</sup> (10 µCi/ml) for various times (10–60 min). They were then rinsed five times with loading buffer (30 s), stored <sup>45</sup>Ca<sup>2+</sup> was extracted with 1 ml 0.1 N HCl for 30 min, and 0.5-ml aliquots were counted.

To investigate <sup>45</sup>Ca<sup>2+</sup> mobilization by IP<sub>3</sub>, induced and permeabilized EcR-CHO-CALNUC cells were loaded with 10 µCi/ml of <sup>45</sup>Ca<sup>2+</sup> as above for 45 min. After washing (five times over 1–1.5 min), cells were challenged with 10 µM IP<sub>3</sub> (D-myo-inositol 1,4,5-trisphosphate potassium salt) in loading buffer, 1 ml/well. Solutions were collected at 2-min intervals, replaced with loading buffer containing IP<sub>3</sub>, and counted.

## Results

### Quantification of Endogenous CALNUC in Rat Liver Golgi Fractions and NRK Cells

To quantify endogenous CALNUC in rat liver Golgi fractions, a linear standard curve was obtained for purified His6-CALNUC (1.3–40 ng) by immunoblotting and densitometric analysis (data not shown). Endogenous CALNUC was found to be present in pooled Golgi light and heavy fractions from rat liver (Saucan and Palade, 1994; Jin et al., 1996) at a concentration of 3.8 µg/mg Golgi protein, i.e., ~0.4% of the total Golgi protein (includes both Golgi resident proteins and cargo in transit through the Golgi). NRK cells were found to have 0.02 µg CALNUC/10<sup>6</sup> cells, or 2.5 × 10<sup>5</sup> CALNUC molecules/NRK cell.

### CALNUC EF-1 Is an Ideal EF-Hand Ca<sup>2+</sup>-binding Motif and Constitutes a High Affinity, Low Capacity Ca<sup>2+</sup>-binding Site

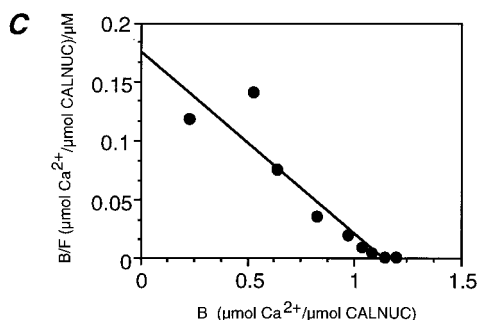
An ideal EF-hand Ca<sup>2+</sup>-binding motif has an α helix-loop-α helix structure in which oxygen ligands (O) provided by carboxy side chains of Asp (D)/Glu (E), carbonyl

**A**

	Helix	Loop					Helix														
		O	O	OG	ΦO	O															
CALNUC EF-1	K T F F I L H	D	I	N	S	D	G	V	L	D	E	Q	L	E	A	L	F	T	K	E	
CALNUC EF-2	E H V M K N V	D	T	N	Q	D	R	L	V	T	L	E	L	F	L	A	S	T	Q	R	K
Cab45 EF-1	M V I F S K V	D	V	N	T	D	R	R	V	S	A	K	E	M	Q	H	W	I	M	E	K
Cab45 EF-2	K L H F R A V	D	P	D	G	D	G	H	V	S	W	D	E	Y	K	V	K	F	L	A	S
Cab45 EF-3	D R W Y Q A D	N	P	P	A	D	L	L	L	E	D	E	F	F	L	S	F	L	H	P	E
Cab45 EF-4	K E I F R D L	D	Q	D	G	D	K	Q	L	S	L	P	F	F	I	S	L	P	V	G	T
Cab45 EF-5	K E F E E L I	D	S	N	H	D	G	I	V	T	M	E	L	E	N	Y	M	D	P	M	
Cab45 EF-6	K Q M I A I A	D	E	N	Q	N	H	H	F	E	P	E	I	L	K	Y	S	E	F	F	
CaM EF-1	K E A F S L F	D	K	D	G	D	G	C	I	T	T	K	E	L	G	T	V	M	R	S	L
CaM EF-2	Q D M I N E V	D	A	D	G	D	G	N	G	T	D	F	P	F	L	N	L	M	A	R	K
CaM EF-3	K E A F R V F	D	K	D	Q	G	N	G	F	S	A	R	L	R	H	V	M	T	N	L	
CaM EF-4	D E M I R E A	D	V	D	G	D	G	Q	L	N	Y	E	F	V	K	V	M	M	A	K	

**B**

CALNUC EF-1	K T F F I L H	D	I	N	S	D	G	V	L	D	E	Q	L	E	A	L	F	T	K	E	
CALNUC EF-2	E H V M K N V	D	T	N	Q	D	R	L	V	T	L	E	L	F	L	A	S	T	Q	R	K
Cab45 EF-5	K E F E E L I	D	S	N	H	D	G	I	V	T	M	E	L	E	N	Y	M	D	P	M	
CaM EF-4	D E M I R E A	D	V	D	G	D	G	Q	L	N	Y	E	F	V	K	V	M	M	A	K	



**Figure 1.** CALNUC EF-1 is an ideal EF-hand  $\text{Ca}^{2+}$ -binding motif. (A) Alignment of the EF-hand loop domains constituting the key  $\text{Ca}^{2+}$ -binding sites in CALNUC, Cab45, and CaM. Consensus amino acids characteristic of ideal EF-hand motifs with oxygen atom-containing side chains (O), a hydrophobic amino acid ( $\Phi$ ), and Gly (G) are boxed. Amino acid numbering corresponding to each EF-hand is as follows: CALNUC (220–246 and 272–298, Z36277), Cab45 (103–129, 142–168, 201–227, 238–264, 283–309, 319–345, U45977), and CaM (14–40, 50–76, 87–113, 124–150, M26151). Numbers in parentheses refer to the amino acid positions and the GenBank accession numbers, respectively. (B) Primary structure of EF-hands in CALNUC, Cab45, and CaM. Sequence comparison shows that CALNUC EF-1 and EF-2 have the highest similarity to Cab45 EF-5 and CaM EF-4, except that CALNUC EF-2 has an Arg (R) instead of a Gly at residue 6 of the loop region. (C) Binding of  $\text{Ca}^{2+}$  to CALNUC is high affinity and low capacity. CALNUC binding to  $\text{Ca}^{2+}$  was examined by equilibrium dialysis. Scatchard analysis reveals the existence of one high affinity ( $K_d = 6.6 \mu\text{M}$ )/low capacity ( $\sim 1.1 \mu\text{mol Ca}^{2+}/\mu\text{mol}$  of protein)  $\text{Ca}^{2+}$ -binding site on CALNUC. Results represent the average of values from six separate experiments performed in triplicate.

groups (C'O) of the peptide main chain and  $\text{H}_2\text{O}$  constitute the  $\text{Ca}^{2+}$ -binding site, and a hydrophobic amino acid ( $\phi$ ) and a Gly (G) are essential for  $\text{Ca}^{2+}$  binding (Kretsinger, 1987; Branden and Tooze, 1991). CALNUC and Cab45 (Scherer et al., 1996) are the only EF-hand,  $\text{Ca}^{2+}$ -binding proteins identified so far in the Golgi. Since their

$\text{Ca}^{2+}$ -binding constants are not yet known, in order to predict and compare the  $\text{Ca}^{2+}$ -binding properties of these two proteins, we compared the EF-hand primary structures of CALNUC (two EF-hands), Cab45 (six EF-hands), and CaM (four EF-hands). Cab45's and CaM's EF-hand motifs are similar (Scherer et al., 1996), and CaM's  $\text{Ca}^{2+}$ -binding properties have been well characterized.

As shown in Fig. 1 A, CALNUC EF-1, Cab45 EF-2 and -5, and all four CaM EF-hand structures constitute ideal EF-hand motifs. CALNUC EF-1 and EF-2 are strikingly similar to CaM EF-4 and Cab45 EF-5, but CALNUC EF-2 has an Arg (R) instead of Gly at residue 6 (Fig. 1 B). This suggests that CALNUC has only a single ideal EF-hand motif, EF-1.

To investigate the binding affinity of CALNUC for  $\text{Ca}^{2+}$ , we performed equilibrium dialysis. Purified recombinant His6-CALNUC was used based on a report that recombinant calreticulin (CRT) was comparable to native CRT in its  $\text{Ca}^{2+}$ -binding capability (Baksh and Michalak, 1991). Scatchard analysis of the binding curve (Fig. 1 C) indicates that CALNUC binds  $\text{Ca}^{2+}$  with a high affinity binding constant ( $K_d = 6.6 \mu\text{M}$ ) and a low capacity,  $\sim 1.1 \mu\text{mol Ca}^{2+}/\mu\text{mol}$  protein, suggesting only one high affinity, low capacity  $\text{Ca}^{2+}$ -binding site on CALNUC.

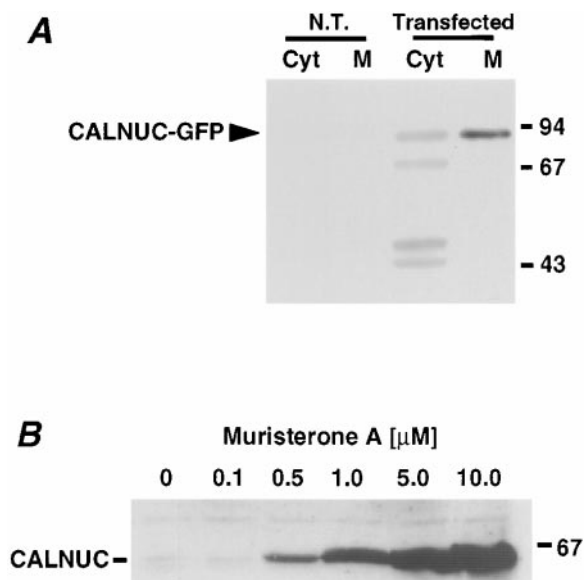
### Overexpressed CALNUC Colocalizes with the Golgi Marker Man II

To further investigate  $\text{Ca}^{2+}$  binding to CALNUC in vivo, we expressed CALNUC-GFP by transient transfection in HeLa cells and generated an inducible cell line, EcR-CHO-CALNUC, stably expressing CALNUC. By immunoblotting, CALNUC-GFP (90 kD) was detected in transiently transfected HeLa cells but not in nontransfected cells (Fig. 2 A). The majority of the CALNUC ( $\sim 85\%$ ) was associated with membranes (100,000 g pellet) and the remainder (15%) was present in the cytosolic fraction (100,000 g supernatant). Three additional bands (Fig. 2 A), also visualized after in vitro translation (data not shown), were also seen. They could be products of protein degradation or mistranslated CALNUC retained in the cytosol. By immunofluorescence the distribution of CALNUC-GFP overlapped with that of the Golgi marker Man II (Fig. 3 A), indicating that the majority of the CALNUC-GFP is correctly targeted to the Golgi.

In EcR-CHO-CALNUC cells induced with muristerone A or ponasterone A (0.1–10  $\mu\text{M}$ ) for 24 h, we found a linear increase in the expression of CALNUC with increasing amounts of added hormone (Fig. 2 B). The ratio of CALNUC in membrane versus cytosolic fractions was similar to that of CALNUC-GFP in HeLa cells (data not shown). By immunofluorescence the distribution of CALNUC again overlapped with that of Man II in the Golgi region (Fig. 3 C) in EcR-CHO-CALNUC cells induced with 10  $\mu\text{M}$  muristerone A for 24 h, and was distinct from that of the ER marker, calnexin (Fig. 3 B).

### Cosedimentation of Overexpressed CALNUC and Man II in Sucrose Gradients

Next we analyzed the distribution of CALNUC in induced EcR-CHO-CALNUC cells using an established procedure for flotation of Golgi membranes and their separation



**Figure 2.** Biochemical analysis of CALNUC expression in transfected cells. (A) HeLa cells transiently transfected with CALNUC-GFP. By immunoblotting (50  $\mu$ g protein),  $\sim$ 85% of the CALNUC-GFP (90 kD) is associated with the membrane pellet (M), and the remaining 15% is found in the cytosolic fraction (Cyt). No signal was detected in nontransfected HeLa cells (N.T.) when the same amount of protein was examined. HeLa cells transfected with CALNUC-GFP cDNA (48 h) were homogenized and membrane (100,000  $g$  pellet) and cytosolic (100,000  $g$  supernatant) fractions were prepared from the postnuclear supernatant. The pellet was resuspended in the same volume as the supernatant, and equal volumes of the membrane and cytosolic fractions were analyzed by SDS-PAGE and immunoblotted with affinity-purified anti-CALNUC IgG. (B) Expression of CALNUC in inducible, stably transfected EcR-CHO-CALNUC cells. By immunoblotting increasing amounts of CALNUC were detected in cell lysates (80  $\mu$ g) after induction with increasing amounts (0.5–10  $\mu$ M) of muristerone A. Cells stably transfected with CALNUC were lysed in 1% Triton X-100. Lysates (80  $\mu$ g) were separated by SDS-PAGE and immunoblotted with affinity-purified anti-CALNUC IgG.

from ER membranes. As shown in Fig. 4, we found that CALNUC and Man II cosedimented and peaked in fractions 12–15 with sucrose densities similar to those previously reported (1.10–1.14 g/ml) (Dunphy and Rothman, 1983; Brown and Farquhar, 1987) for CHO cells. By contrast, the ER marker, calnexin, peaked in denser fractions 7–11 (1.16–1.19 g/ml). These results together with the immunofluorescence findings demonstrate that overexpressed CALNUC is found in the Golgi and is consistent with our previous conclusion (Lin et al., 1998) that overexpression does not lead to mistargeting of CALNUC.

#### **Overexpression of CALNUC-GFP or CALNUC in the Golgi Increases $^{45}\text{Ca}^{2+}$ Uptake**

To assess whether overexpressed CALNUC-GFP binds  $\text{Ca}^{2+}$  in the Golgi, we carried out *in vivo* equilibrium  $\text{Ca}^{2+}$  uptake. The  $^{45}\text{Ca}^{2+}$  loading time was  $\sim$ 48 h, the time shown previously to be long enough to reach  $^{45}\text{Ca}^{2+}$  equilibrium in cultured cells (Mery et al., 1996).  $^{45}\text{Ca}^{2+}$  uptake

by HeLa cells transiently overexpressing CALNUC-GFP was 2.5-fold that of nontransfected HeLa cells or those stably expressing GFP alone (Fig. 5 A). Similarly, there was a threefold increase in  $^{45}\text{Ca}^{2+}$  taken up by induced (5  $\mu$ M muristerone A for 48 h) versus noninduced EcR-CHO-CALNUC cells (Fig. 5 B). These results demonstrate that Golgi-associated CALNUC binds  $\text{Ca}^{2+}$  *in vivo* and most likely is responsible for sequestering  $\text{Ca}^{2+}$  in the Golgi lumen.

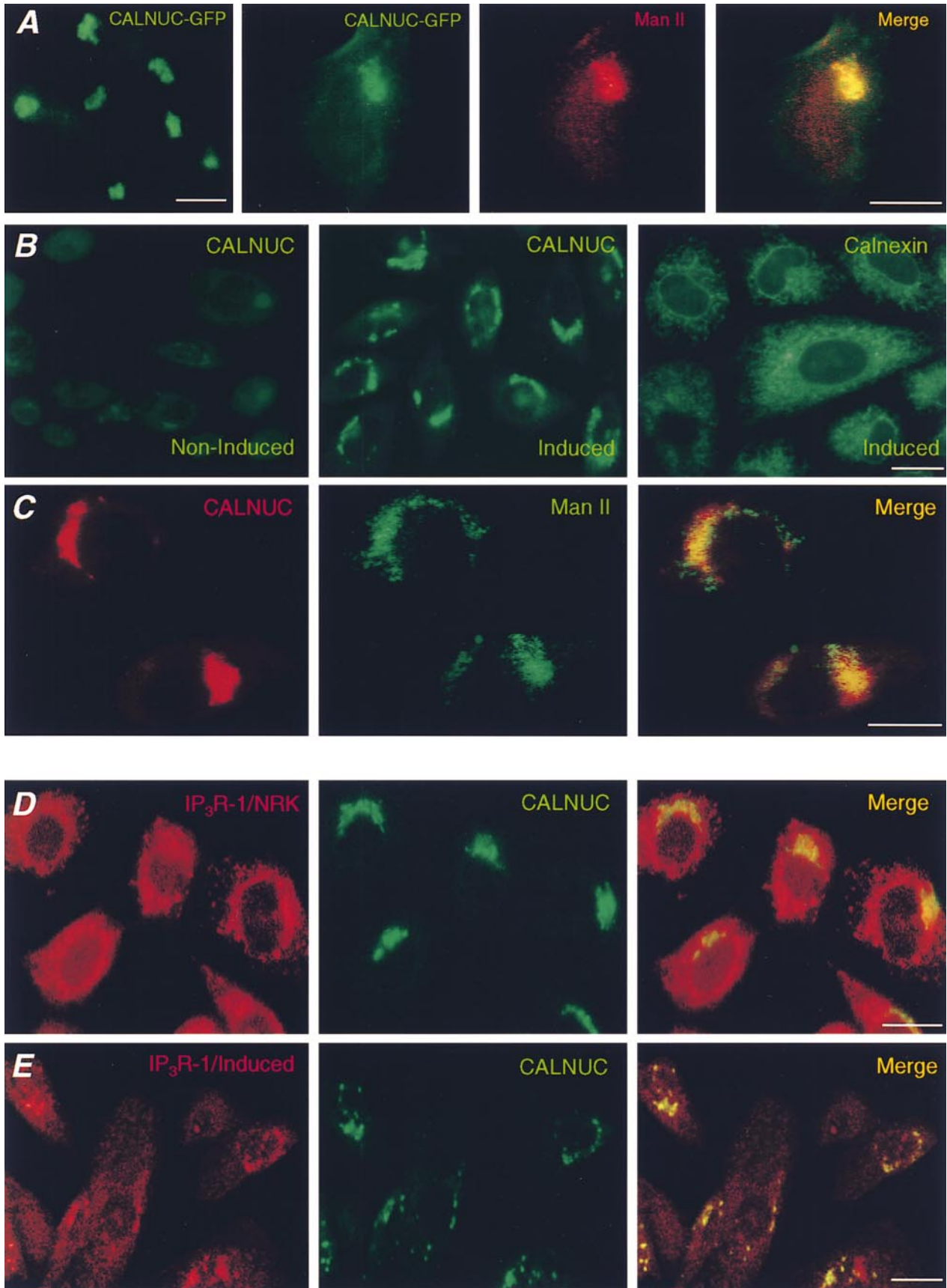
To investigate whether EF-1 is indeed the sole  $\text{Ca}^{2+}$ -binding motif in CALNUC, we examined  $\text{Ca}^{2+}$  binding in HeLa cells transiently transfected with truncated CALNUC-GFP mutants. When the  $\alpha$  helix of EF-1 (Asp<sub>227</sub>–Leu<sub>239</sub>) or both EF-1 and EF-2 (Asp<sub>227</sub>–Phe<sub>291</sub>) were deleted from CALNUC, its  $\text{Ca}^{2+}$ -binding capability was completely abolished (Fig. 5 A). Mistargeting could be ruled out since the majority of the mutant CALNUC-GFP was detected in the Golgi region by fluorescence. The results obtained from this *in vivo*  $\text{Ca}^{2+}$ -binding analysis provide direct evidence that CALNUC binds  $\text{Ca}^{2+}$  in the Golgi, and EF-1 constitutes the sole  $\text{Ca}^{2+}$ -binding site on CALNUC. The latter is in agreement with the data shown in Fig. 1.

#### **Release of Sequestered $^{45}\text{Ca}^{2+}$ by the SERCA Inhibitor, Tg**

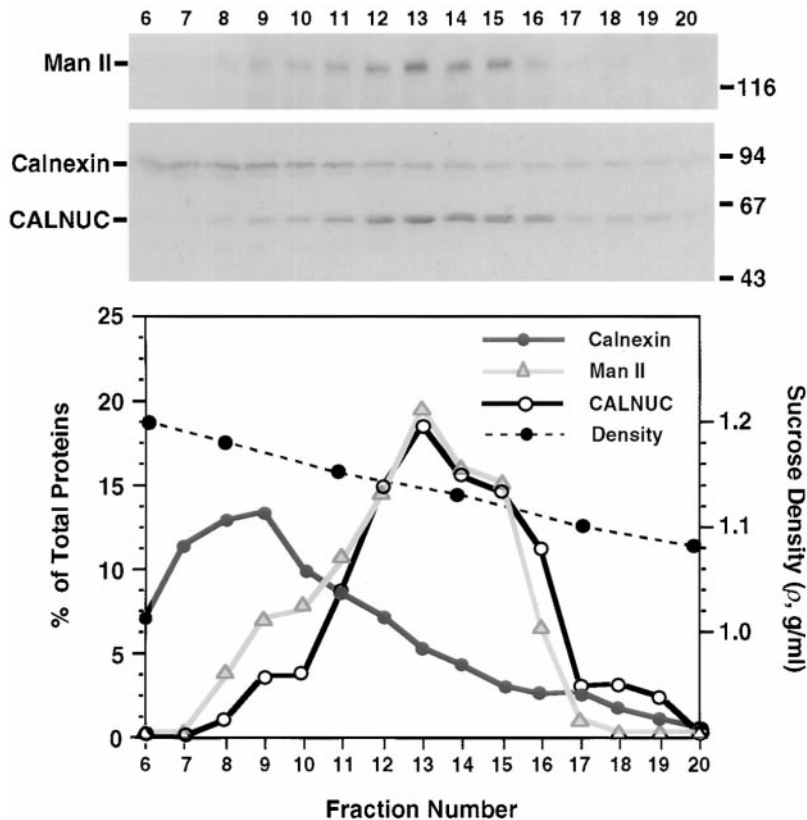
To further investigate the characteristics of the Golgi  $\text{Ca}^{2+}$  pool, we performed experiments similar to those done previously to characterize the ER  $\text{Ca}^{2+}$  pool in cells overexpressing CRT (Bastianutto et al., 1995; Mery et al., 1996). When HeLa cells transiently overexpressing CALNUC-GFP or EcR-CHO-CALNUC cells stably expressing CALNUC were treated with the SERCA inhibitor Tg (Thastrup et al., 1990),  $\sim$ 73% and 70%, respectively, of the  $^{45}\text{Ca}^{2+}$  was released (Fig. 6), suggesting the existence of SERCA on Golgi membranes. Since some Tg-insensitive organelles are capable of retaining  $\text{Ca}^{2+}$  after Tg treatment, we subsequently treated cells with the  $\text{Ca}^{2+}$  ionophore ionomycin to release the remaining stored  $^{45}\text{Ca}^{2+}$ . Nearly all the remaining  $^{45}\text{Ca}^{2+}$  ( $\sim$ 20–25%) was released by ionomycin (Fig. 6). In view of the fact that ionomycin is inactivated in acidic compartments such as secretory granules and endosomes, we further treated cells with monensin, a carboxylic sodium proton ionophore which releases  $\text{Ca}^{2+}$  from acidic compartments (Bastianutto et al., 1995; Mery et al., 1996) and found  $<$ 5% of the  $^{45}\text{Ca}^{2+}$  was released. Cells overexpressing CALNUC-GFP or induced EcR-CHO-CALNUC cells released twice as much  $^{45}\text{Ca}^{2+}$  as nontransfected HeLa cells, HeLa cells stably expressing GFP alone, or noninduced EcR-CHO-CALNUC cells. The fact that the majority of the  $^{45}\text{Ca}^{2+}$  taken up by CALNUC was released by Tg suggests that both CALNUC and SERCA play a key role in sequestering  $^{45}\text{Ca}^{2+}$  in the Golgi, a conclusion in agreement with the recent description of SERCA associated with isolated Golgi fractions (Taylor et al., 1997).

#### **Release of Sequestered $\text{Ca}^{2+}$ from the Golgi by Extracellular ATP**

We next examined whether or not  $\text{Ca}^{2+}$  sequestered in the Golgi is released after agonist challenge. Extracellular



**Figure 3.** (A–C) Overexpressed CALNUC is correctly targeted to the Golgi. (A) HeLa cells transiently expressing CALNUC-GFP. CALNUC-GFP is concentrated in the Golgi region where it partially overlaps with the Golgi marker Man II. Cells were fixed in paraformaldehyde, permeabilized, and incubated with anti-Man II serum followed by Texas red-conjugated donkey anti-rabbit



**Figure 4.** CALNUC cosediments with Man II in sucrose gradients. Total microsomes prepared from induced EcR-CHO-CALNUC cells were subjected to sucrose gradient flotation (85,500 *g* for 16 h) as described in Materials and Methods. 20 fractions were collected from the bottom, followed by 5 or 10% SDS-PAGE and immunoblotting analysis. CALNUC peaked in fractions 12–15 where it cosedimented with the Golgi marker Man II, whereas the ER marker calnexin peaked in denser fractions 7–11.

ATP is known to activate phospholipase C (PLC) (Brown et al., 1991) via binding to G protein-coupled nucleotide receptors on the cell surface (O'Connor, 1992). Activated PLC promotes production of IP<sub>3</sub> which binds to IP<sub>3</sub>R on the ER and triggers Ca<sup>2+</sup> mobilization. To investigate whether Ca<sup>2+</sup> sequestered by overexpressed CALNUC in the Golgi could be released by agonist, we examined Ca<sup>2+</sup> release in EcR-CHO-CALNUC cells by Ca<sup>2+</sup> imaging after ATP challenge. The results (Fig. 7 A) demonstrated that the ratio, 340:380, was doubled in cells induced with 2.5 μM ponasterone A for 24 h compared with noninduced cells, suggesting that more Ca<sup>2+</sup> was released from induced cells. Similar results were also obtained when induced EcR-CHO-CALNUC cells were loaded with <sup>45</sup>Ca<sup>2+</sup> (Fig. 7 B). These results obtained by two different methods suggest that the Golgi Ca<sup>2+</sup> store is sensitive to IP<sub>3</sub> generated after ATP binding.

#### Release of <sup>45</sup>Ca<sup>2+</sup> Sequestered in the Golgi by IP<sub>3</sub>

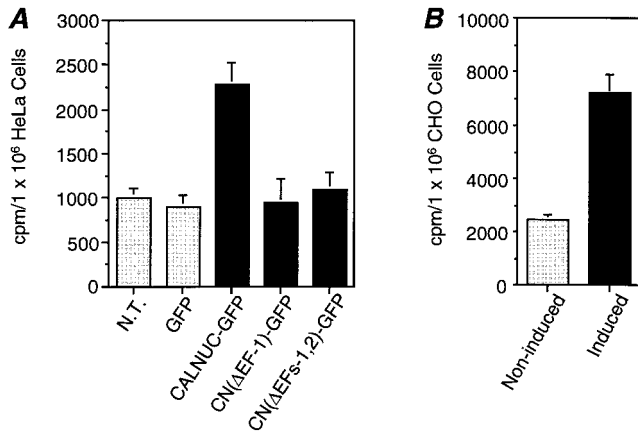
To obtain direct evidence that IP<sub>3</sub> is able to release Ca<sup>2+</sup>

from the Golgi, <sup>45</sup>Ca<sup>2+</sup> uptake and release studies were performed on permeabilized EcR-CHO-CALNUC cells. Fig. 8 A reveals that <sup>45</sup>Ca<sup>2+</sup> is rapidly taken up by both induced and noninduced permeabilized cells, but approximately twice the amount of <sup>45</sup>Ca<sup>2+</sup> was sequestered by cells overexpressing CALNUC. Steady state was achieved 45 min after loading, which was slower than reported for Swiss 3T3 cells (20 min) (Berridge et al., 1984). <sup>45</sup>Ca<sup>2+</sup> release was then stimulated by addition of IP<sub>3</sub> (Fig. 8 B). The ratio of <sup>45</sup>Ca<sup>2+</sup> released from induced versus noninduced cells was ~2:1. These results support the previous report of Pinton and colleagues (1998) suggesting that both Golgi membranes and ER membranes bear IP<sub>3</sub>R.

#### Localization of the IP<sub>3</sub> Receptor on the Golgi and ER by Immunofluorescence

In view of the functional evidence for the existence of IP<sub>3</sub>R on the Golgi, we carried out immunofluorescence studies on NRK cells and induced EcR-CHO-CALNUC cells using a mAb that recognizes IP<sub>3</sub>R-1. IP<sub>3</sub>R-1 was

F(ab')<sub>2</sub> as described in Materials and Methods. (B) Induced or noninduced EcR-CHO-CALNUC cells. Overexpressed CALNUC is concentrated in the Golgi region in the induced cells in a pattern distinct from that of the ER marker, calnexin. Virtually no signal is detected in noninduced cells. Induced (murristerone A, 10 μM for 24 h) or noninduced cells were labeled with affinity-purified anti-CALNUC or anticalnexin serum and processed as in A. (C) Double labeling of induced EcR-CHO-CALNUC cells with anti-CALNUC IgG and anti-Man II mAb. The distribution of overexpressed CALNUC overlaps with that of Man II in the Golgi. Detection was with Texas red-conjugated donkey anti-mouse IgG and FITC-conjugated donkey anti-rabbit IgG. (D) Codistribution of IP<sub>3</sub>R with both ER and Golgi. NRK cells coimmunostained as above with anti-CALNUC IgG and mAb anti-IP<sub>3</sub>R-1 (18A10). IP<sub>3</sub>R-1 has an ER-type distribution and also overlaps with CALNUC in the Golgi region. Analysis was carried out on whole cells. (E) Similar preparation of induced EcR-CHO-CALNUC cells analyzed by confocal microscopy, showing overlap of staining for IP<sub>3</sub>R and CALNUC. Bars, 10 μm.



**Figure 5.** Overexpression of CALNUC increases  $^{45}\text{Ca}^{2+}$  uptake. (A) Nontransfected HeLa cells (N.T.), or those stably transfected with GFP alone, or transiently expressing CALNUC-GFP or CALNUC-GFP deletion mutants were incubated with  $2\ \mu\text{Ci/ml}$   $^{45}\text{Ca}^{2+}$  for 48 h to reach  $^{45}\text{Ca}^{2+}$  equilibrium.  $^{45}\text{Ca}^{2+}$  uptake by cells overexpressing CALNUC-GFP was 2.5-fold (2,500 vs. 1,000 cpm) greater than that found in nontransfected cells or those expressing GFP alone. Truncated CALNUC in which both EF-1 [CN( $\Delta$ EF-1)-GFP] or EF-1 and EF-2 [CN( $\Delta$ EF-1, 2)-GFP] were deleted completely lost  $\text{Ca}^{2+}$ -binding capability. (B) EcR-CHO cells stably transfected with CALNUC cDNA (EcR-CHO-CALNUC) were loaded with  $^{45}\text{Ca}^{2+}$  as in A.  $^{45}\text{Ca}^{2+}$  uptake in induced cells ( $10\ \mu\text{M}$  muristerone A) was threefold that found in noninduced cells (7,400 vs. 2,500 cpm). Results (mean  $\pm$  SD) represent the average of values obtained in three separate experiments performed in duplicate.

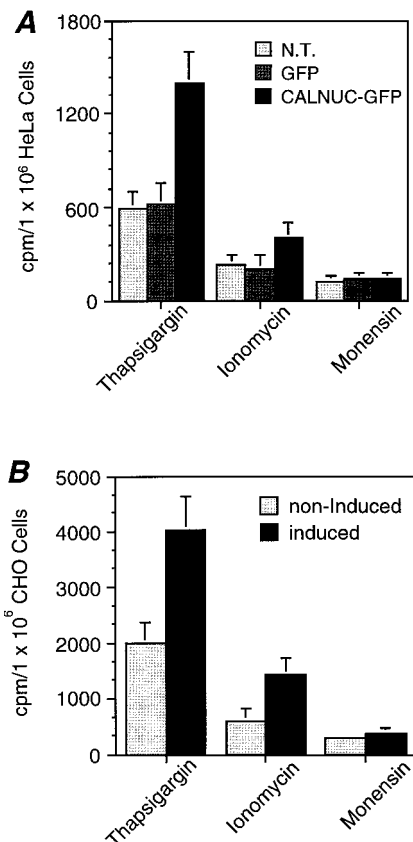
found throughout the cytoplasm and concentrated in the Golgi region (Fig. 3 D) which is compatible with both an ER and Golgi localization. Confocal analysis (Fig. 3 E) showed that the distribution of IP<sub>3</sub>R-1 overlaps with that of CALNUC in the juxtannuclear region, suggesting that IP<sub>3</sub>R-1 and CALNUC colocalize on Golgi membranes. As mentioned by Pinton and co-workers (1998), it was not possible to carry out reproducible immunogold localization by immunoelectron microscopy with the antibody available.

## Discussion

The Golgi complex has been recently identified as a  $\text{Ca}^{2+}$ -enriched compartment whose total  $\text{Ca}^{2+}$  concentration is  $>0.1\ \text{mM}$  (Chandra et al., 1991; Pezzati et al., 1997; Pinton et al., 1998), but the question of how  $\text{Ca}^{2+}$  is sequestered in the Golgi has remained unanswered. Previously we showed that CALNUC is the major  $\text{Ca}^{2+}$ -binding protein in Golgi fractions from rat liver detected by  $^{45}\text{Ca}^{2+}$  overlay (Lin et al., 1998). In this study we provide evidence that CALNUC binds  $\text{Ca}^{2+}$  in the Golgi in vivo, because overexpression of CALNUC in the Golgi led to a two- to threefold increase in  $\text{Ca}^{2+}$  storage based on  $\text{Ca}^{2+}$  equilibrium loading. This suggests that CALNUC is directly involved in maintenance of  $\text{Ca}^{2+}$  storage and thereby in  $\text{Ca}^{2+}$  homeostasis in the Golgi. Equilibrium dialysis demonstrated the existence of only a single high affinity ( $K_d =$

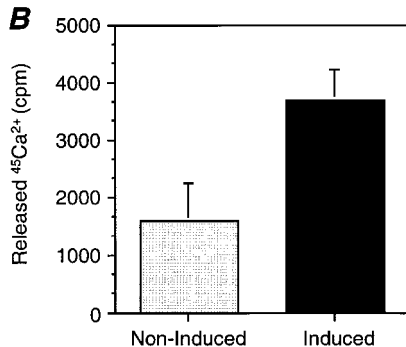
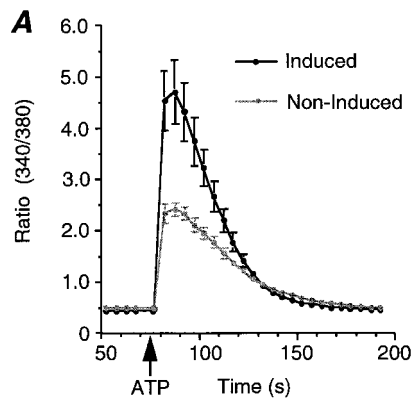
$6.6\ \mu\text{M}$ )/low capacity ( $\sim 1\ \text{mol}\ \text{Ca}^{2+}/\text{mol}$  protein) binding site on recombinant CALNUC. CALNUC's low  $\text{Ca}^{2+}$ -binding capacity in the Golgi might be compensated for by its abundance ( $3.8\ \mu\text{g}/\text{mg}$  Golgi protein).

The demonstration of a single, high affinity  $\text{Ca}^{2+}$ -binding site is in keeping with the fact that CALNUC possesses two EF-hand motifs but only one, EF-1, has the structure expected for high affinity calcium binding. EF-2 has an Arg (R) instead of a Gly (G) at residue 6 of the EF-hand loop region. Arg is supposed to disrupt the EF-hand motif and abolish its  $\text{Ca}^{2+}$ -binding capacity (Branden and Tooze, 1991). CALNUC's EF-1 has the highest homology to the COOH-terminal EF-4 of CaM which constitutes the high affinity  $\text{Ca}^{2+}$ -binding site of CaM (Crouch and Klee, 1980). Moreover, the  $\text{Ca}^{2+}$ -binding capability of CAL-



**Figure 6.** Most of the  $^{45}\text{Ca}^{2+}$  taken up by CALNUC in the Golgi is released by the SERCA inhibitor Tg. Cells were incubated with  $^{45}\text{Ca}^{2+}$  for 48 h as in Fig. 5 and sequentially treated with  $0.1\ \mu\text{M}$  Tg,  $2\ \mu\text{M}$  ionomycin, and  $2\ \mu\text{M}$  monensin.  $^{45}\text{Ca}^{2+}$  release into the medium was measured after each treatment. (A)  $\sim 73\%$ ,  $\sim 20\%$ , and  $7\%$  of the  $^{45}\text{Ca}^{2+}$  was released from HeLa cells transiently overexpressing CALNUC-GFP after Tg, ionomycin, and monensin treatments, respectively. Nontransfected HeLa cells (N.T.) or those stably expressing GFP alone did not release as much  $^{45}\text{Ca}^{2+}$  as HeLa cells overexpressing CALNUC-GFP. (B) Similar results ( $70\%$ ,  $25\%$ , and  $5\%$ ) for  $\text{Ca}^{2+}$  release were obtained for induced ( $5\ \mu\text{M}$  ponasterone A for 24 h) EcR-CHO-CALNUC cells following sequential treatment as above. Induced cells release twice as much  $^{45}\text{Ca}^{2+}$  as noninduced cells. Results (mean  $\pm$  SD) represent the average of values obtained in three separate experiments performed in duplicate.

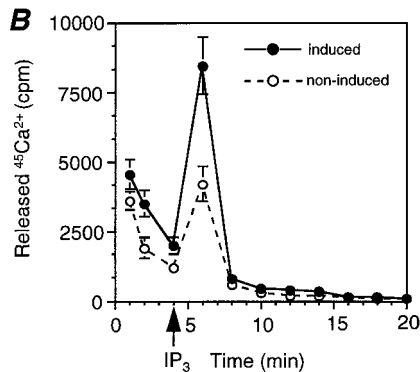
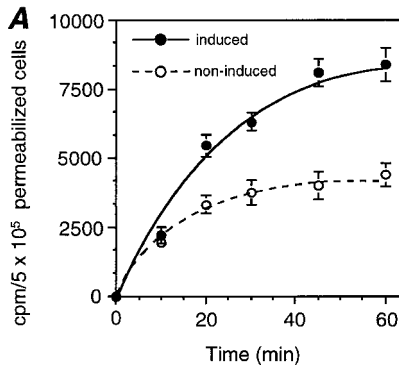




**Figure 7.** The Golgi  $\text{Ca}^{2+}$  pool is sensitive to stimulation with ATP. (A) Induced ( $2.5 \mu\text{M}$  ponasterone A for 24 h) or noninduced EcR-CHO-CALNUC cells were loaded with  $1 \mu\text{M}$  Fura-2 AM for 1 h, followed by challenge with  $100 \mu\text{M}$  ATP. Released  $\text{Ca}^{2+}$  was monitored by  $\text{Ca}^{2+}$  imaging. More  $\text{Ca}^{2+}$  was released after ATP stimulation from cells overexpressing CALNUC than from noninduced cells. Results represent the average of values from 14 induced cells and 15 noninduced cells. Reproducible results were obtained from experiments repeated twice. (B) Noninduced or induced EcR-CHO-CALNUC cells were loaded with  $^{45}\text{Ca}^{2+}$  ( $2 \mu\text{Ci/ml}$ ) for 48 h to reach  $^{45}\text{Ca}^{2+}$  equilibrium. Cells were washed and resuspended in KRH buffer supplemented with 3 mM EGTA, followed by stimulation with  $100 \mu\text{M}$  ATP for 5 min at room temperature. Aliquots of  $10^6$  cells were subsequently removed, the cells were sedimented, and  $^{45}\text{Ca}^{2+}$  in supernatants and pellets was assessed. Compared with noninduced cells, there was a twofold increase in the  $^{45}\text{Ca}^{2+}$  released in cells overexpressing CALNUC. Results (mean  $\pm$  SD) represent the average of values obtained in three separate experiments performed in duplicate.

NUC EF-1 was demonstrated previously by  $^{45}\text{Ca}^{2+}$  overlay on truncated CALNUC. When EF-2 was deleted,  $\text{Ca}^{2+}$  binding was maintained, but when both EF-1 and EF-2 were deleted,  $\text{Ca}^{2+}$ -binding capability was lost (Miura et al., 1994). In this study, we further demonstrated that truncated CALNUC with either the EF-1  $\alpha$  helix (Asp<sub>227</sub>-Leu<sub>239</sub>) or both EF-1 and EF-2 domains (Asp<sub>227</sub>-Phe<sub>291</sub>) deleted lost  $\text{Ca}^{2+}$ -binding capability completely. The majority of each of the CALNUC mutant proteins was still targeted to the Golgi region as monitored via the GFP tag. Collectively, these data suggest that EF-1 may constitute the sole high affinity  $\text{Ca}^{2+}$ -binding site on CALNUC.

Characterization of the  $\text{Ca}^{2+}$  pool in HeLa and CHO cells overexpressing CALNUC provides several important



**Figure 8.**  $\text{Ca}^{2+}$  sequestered by CALNUC in the Golgi was released directly by  $\text{IP}_3$  treatment of permeabilized cells. (A)  $^{45}\text{Ca}^{2+}$  uptake. Noninduced or induced EcR-CHO-CALNUC cells ( $10^6$  cells/well) were permeabilized with  $50 \mu\text{g/ml}$  saponin for 4 min, followed by loading with  $^{45}\text{Ca}^{2+}$  ( $10 \mu\text{Ci/ml}$ ) for the times indicated. Stored  $^{45}\text{Ca}^{2+}$  was extracted with 1 ml 0.1 N HCl for 30 min, and 0.5-ml aliquots were counted. Induced cells took up twice as much  $^{45}\text{Ca}^{2+}$  as noninduced cells.  $^{45}\text{Ca}^{2+}$  uptake reached equilibrium at  $\sim 45$  min after loading. (B)  $^{45}\text{Ca}^{2+}$  release. Induced or noninduced EcR-CHO-CALNUC cells ( $10^6$  cells/well) were permeabilized and loaded with  $10 \mu\text{Ci/ml}$  of  $^{45}\text{Ca}^{2+}$  for 45 min to reach equilibrium and  $\text{IP}_3$  ( $10 \mu\text{M}$ ) was added. Aliquots (10) were collected at 2-min intervals. Stored  $^{45}\text{Ca}^{2+}$  could be directly released by  $\text{IP}_3$ . Twice as much  $^{45}\text{Ca}^{2+}$  was released from induced as noninduced cells. Results (mean  $\pm$  SD) represent the average of values obtained in three separate experiments performed in duplicate.

new pieces of information.  $^{45}\text{Ca}^{2+}$  sequestered in the Golgi in cells overexpressing CALNUC was largely released by Tg, an irreversible inhibitor of the SERCA  $\text{Ca}^{2+}$  pump, providing *in vivo* evidence for the existence of SERCAs on Golgi membranes. SERCAs were also assumed to be localized on Golgi membranes because it was shown previously that the p-type, Tg-sensitive SERCA  $\text{Ca}^{2+}$  pump was essential for  $\text{Ca}^{2+}$  uptake into isolated Golgi fractions *in vitro* (Taylor et al., 1997). Our results also suggest that the increase in  $^{45}\text{Ca}^{2+}$  uptake in cells overexpressing CALNUC is not likely to be due to the presence of CALNUC in the cytosol or another recently reported Tg- and  $\text{IP}_3$ -insensitive  $\text{Ca}^{2+}$  pool (Pizzo et al., 1997) since the majority of the  $\text{Ca}^{2+}$  was released only after SERCA was inhibited.

Our finding that only a small amount of the  $\text{Ca}^{2+}$  remaining after Tg treatment was released by subsequent

ionomycin treatment might be due to incomplete depletion of  $\text{Ca}^{2+}$  from the Golgi by Tg, since the existence of a Tg-insensitive/ionomycin-sensitive-plasma membrane calcium ATPase  $\text{Ca}^{2+}$  pump on Golgi membranes has also been reported recently (Taylor et al., 1997). The fact that monensin treatment which depletes  $\text{Ca}^{2+}$  from acidic compartments (secretory vesicles, granules, trans-Golgi network) (Fasolato et al., 1991) did not release a significant amount of  $\text{Ca}^{2+}$  demonstrates that  $\text{Ca}^{2+}$  was not sequestered in an acidic compartment. Thus, our current results from in vivo studies suggest that the  $\text{Ca}^{2+}$ -binding protein CALNUC together with SERCA  $\text{Ca}^{2+}$  pumps are responsible for the maintenance of the Golgi  $\text{Ca}^{2+}$  storage pool.

We also investigated the agonist sensitivity of the Golgi  $\text{Ca}^{2+}$  pool. It was shown recently that the Golgi  $\text{Ca}^{2+}$  store is sensitive to histamine, an agonist known to be coupled to  $\text{IP}_3$  generation (Pinton et al., 1998), suggesting that there may be  $\text{IP}_3\text{R}$  on Golgi membranes. Here we used extracellular ATP, another agonist known to generate  $\text{IP}_3$  after binding to plasma membrane nucleotide receptors ( $\text{P}_{2y}$ -purinoceptors) (O'Connor, 1992), to investigate the sensitivity of the Golgi  $\text{Ca}^{2+}$  store to  $\text{IP}_3$ . ATP challenge is coupled to  $\text{IP}_3$  production via activation of PLC (Brown et al., 1991), and binding of  $\text{IP}_3$  to  $\text{IP}_3\text{R}$  on the surface of  $\text{Ca}^{2+}$  pool releases intracellular  $\text{Ca}^{2+}$  (Iredale and Hill, 1993). When ATP was added to induced EcR-CHO-CALNUC cells, there was a rapid release of sequestered  $\text{Ca}^{2+}$  revealed by both  $\text{Ca}^{2+}$  imaging and  $^{45}\text{Ca}^{2+}$  which far exceeded that released from noninduced cells. Moreover,  $\text{IP}_3$  directly triggered  $^{45}\text{Ca}^{2+}$  mobilization from the Golgi in permeabilized EcR-CHO-CALNUC cells. Thus, our biochemical results and those of Pinton et al. (1998) using histamine as agonist suggest that the Golgi apparatus bears  $\text{IP}_3\text{R}$ . The assumption that  $\text{IP}_3\text{R}$  are expressed on the Golgi is supported by our immunofluorescence observations suggesting a dual localization of  $\text{IP}_3\text{R}$ -1 on both ER and Golgi membranes. CHO cells were found previously to express ample  $\text{IP}_3\text{R}$ -1 by immunoprecipitation (Monkawa et al., 1995) using mAb 18A10 (Furuichi et al., 1989) which specifically recognizes the COOH terminus of  $\text{IP}_3\text{R}$ -1.

A major controversy in the physiology of intracellular  $\text{Ca}^{2+}$  stores concerns the mechanism by which their depletion triggers influx of  $\text{Ca}^{2+}$  through the plasma membrane. In vertebrate cells, it has been assumed generally that the relevant store is the ER (Randriamampita and Tsien, 1993; Parekh and Penner, 1997). However, because both ER and Golgi accumulate  $\text{Ca}^{2+}$  via SERCAs and release  $\text{Ca}^{2+}$  via  $\text{IP}_3$  receptors, both should undergo depletion roughly in parallel, so one cannot yet exclude a role for the Golgi in controlling plasma membrane  $\text{Ca}^{2+}$  influx. In yeast, store-operated  $\text{Ca}^{2+}$  influx appears to be controlled mainly at the Golgi, because genetic deletion of the Golgi  $\text{Ca}^{2+}$  pump encoded by *PMR1* increases the influx of extracellular  $\text{Ca}^{2+}$  (Halachmi and Eilam, 1996). Therefore, we tried to distinguish between ER and Golgi contributions by testing whether overexpression of CALNUC in *Xenopus* oocytes affected the store-operated  $\text{Ca}^{2+}$  current, Isoc (Yao and Tsien, 1997). If the Golgi were important, increasing the quantity of  $\text{Ca}^{2+}$  buffer in its lumen should diminish or delay Isoc (Mery et al., 1996; Fasolato et al., 1998). Overexpression of CALNUC (via microinjection of

its mRNA) increased the  $^{45}\text{Ca}^{2+}$  content of oocytes analogously with Fig. 5 and appeared by fluorescence microscopy to be colocalized with the Golgi marker galactosyltransferase fused to GFP (Llopis et al., 1998). However, CALNUC overexpression did not significantly affect Isoc, either partially activated by the membrane-permeant  $\text{Ca}^{2+}$  buffer TPEN (Arslan et al., 1985; Hofer et al., 1998) or maximally activated by the ionophore ionomycin. This negative result might seem to argue against a major role for the Golgi in controlling  $\text{Ca}^{2+}$  influx into oocytes, but a firm conclusion would require additional controls such as immunoelectron microscopic localization of CALNUC and evidence that comparable increases in ER buffering do affect Isoc.

Previously, we demonstrated significant homology between CALNUC and CRT and two conserved motifs, AY(I/A)EE and QRLX(Q/E)E(I/E)E, located in the C-domain of CRT (aa<sub>337-341</sub> and <sub>365-372</sub>) (Lin et al., 1998). However, the homologous regions do not involve  $\text{Ca}^{2+}$ -binding domains. CRT lacks EF-hand motifs but possesses a high affinity/low capacity and a low affinity ( $K_d = 2$  mM)/high capacity (21  $\mu\text{mol Ca}^{2+}/\mu\text{mol protein}$ )  $\text{Ca}^{2+}$ -binding site (Baksh and Michalak, 1991) constituted by clusters of  $\sim 35$  Asp (D)/Glu (E) located in CRT's C-domain. In the future it will be of interest to examine whether CALNUC can function like CRT, its ER-resident counterpart (Lin et al., 1998), to maintain a high  $\text{Ca}^{2+}$  concentration required for Golgi functions, e.g., sorting, lectin binding, budding, and concentration of cargo into regulated secretory granules.

In summary, this study demonstrates that CALNUC, an abundant Golgi resident protein and the major Golgi  $\text{Ca}^{2+}$ -binding protein, together with SERCA  $\text{Ca}^{2+}$  pumps and  $\text{IP}_3\text{R}$  are involved in the maintenance of the  $\text{Ca}^{2+}$  storage pool in the Golgi. Further investigation of several remaining intriguing questions including whether the binding of  $\text{Ca}^{2+}$  to CALNUC regulates membrane traffic or posttranslational processing events in the Golgi, should shed light on the biological functions of CALNUC and on the Golgi  $\text{Ca}^{2+}$  pool.

We thank Dr. Larry Goldstein (Howard Hughes Medical Institute, UCSD) for use of his confocal microscope, and Dr. Ralf-Peter Czekay for assistance in the confocal analysis. We also thank Michele Wilhite and Tammie McQuistan (Immunoelectron Microscopy Core Facility) for their valuable assistance in the immunocytochemical studies, and Dennis Young (Flow Cytometry Core Facility, UCSD) for assistance in FACS<sup>®</sup> sorting.

This work was supported by National Institutes of Health grants DK17780 and CA58689 to M.G. Farquhar, and National Institutes of Health grant NS27177 and a Human Frontiers Science Program Grant to R.Y. Tsien.

Received for publication 15 October 1998 and in revised form 17 March 1999.

#### References

- Arslan, P., F. Di Virgilio, M. Beltrame, R.Y. Tsien, and T. Pozzan. 1985. Cytosolic  $\text{Ca}^{2+}$  homeostasis in Ehrlich and Yoshida carcinomas. A new, membrane-permeant chelator of heavy metals reveals that these ascites tumor cell lines have normal cytosolic free  $\text{Ca}^{2+}$ . *J. Biol. Chem.* 260:2719-2727.
- Baksh, S., and M. Michalak. 1991. Expression of calreticulin in *Escherichia coli* and identification of its  $\text{Ca}^{2+}$  binding domains. *J. Biol. Chem.* 266:21458-21465.
- Bastianutto, C., E. Clementi, F. Codazzi, P. Podini, F. De Giorgi, R. Rizzuto, J. Meldolesi, and T. Pozzan. 1995. Overexpression of calreticulin increases the

- Ca<sup>2+</sup> capacity of rapidly exchanging Ca<sup>2+</sup> stores and reveals aspects of their luminal microenvironment and function. *J. Cell Biol.* 130:847–855.
- Baumrucker, C.R., and T.W. Keenan. 1975. Membranes of mammary gland. X. Adenosine triphosphate dependent calcium accumulation by Golgi apparatus rich fractions from bovine mammary gland. *Exp. Cell Res.* 90:253–260.
- Berridge, M.J., J.P. Heslop, R.F. Irvine, and K.D. Brown. 1984. Inositol triphosphate formation and calcium mobilization in Swiss 3T3 cells in response to platelet-derived growth factor. *Biochem. J.* 222:195–201.
- Branden, C., and J. Tooze. 1991. Motifs of protein structure. In *Introduction to Protein Structure*. C. Branden and J. Tooze, editors. Garland Publishing, New York.
- Brown, H.A., E.R. Lazarowski, R.C. Boucher, and T.K. Harden. 1991. Evidence that UTP and ATP regulate phospholipase C through a common extracellular 5'-nucleotide receptor in human airway epithelial cells. *Mol. Pharmacol.* 40:648–655.
- Brown, W.J., and M.G. Farquhar. 1987. The distribution of 215-kilodalton mannose 6-phosphate receptors within cis (heavy) and trans (light) Golgi sub-fractions varies in different cell types. *Proc. Natl. Acad. Sci. USA.* 84:9001–9005.
- Chandra, S., E.P. Kable, G.H. Morrison, and W.W. Webb. 1991. Calcium sequestration in the Golgi apparatus of cultured mammalian cells revealed by laser scanning confocal microscopy and ion microscopy. *J. Cell Sci.* 100:747–752.
- Crouch, T.H., and C.B. Klee. 1980. Positive cooperative binding of calcium to bovine brain calmodulin. *Biochemistry.* 19:3692–3698.
- Davidson, H.W., C.J. Rhodes, and J.C. Hutton. 1988. Intraorganellar calcium and pH control proinsulin cleavage in the pancreatic beta cell via two distinct site-specific endopeptidases. *Nature.* 333:93–96.
- De Smedt, F., L. Missiaen, J.B. Parys, V. Vanweyenberg, H. De Smedt, and C. Erneux. 1997. Isoprenylated human brain type I inositol 1,4,5-trisphosphate 5-phosphatase controls Ca<sup>2+</sup> oscillations induced by ATP in Chinese hamster ovary cells. *J. Biol. Chem.* 272:17367–17375.
- Duncan, J.S., and R.D. Burgoyne. 1996. Characterization of the effects of Ca<sup>2+</sup> depletion on the synthesis, phosphorylation and secretion of caseins in lactating mammary epithelial cells. *Biochem. J.* 317:487–493.
- Dunphy, W.G., and J.E. Rothman. 1983. Compartmentation of asparagine-linked oligosaccharide processing in the Golgi apparatus. *J. Cell Biol.* 97:270–275.
- Farquhar, M.G., and H.-P. Hauri. 1997. Protein sorting and vesicular traffic in the Golgi apparatus. In *The Golgi Apparatus*. E.G. Berger and J. Roth, editors. Birkhauser Verlag, Basel. 63–129.
- Farquhar, M.G., and G.E. Palade. 1998. The Golgi apparatus: 100 years of progress and controversy. *Trends Cell Biol.* 8:2–11.
- Fasolato, C., M. Zottini, E. Clementi, D. Zaccchetti, J. Meldolesi, and T. Pozzan. 1991. Intracellular Ca<sup>2+</sup> pools in PC12 cells. Three intracellular pools are distinguished by their turnover and mechanisms of Ca<sup>2+</sup> accumulation, storage, and release. *J. Biol. Chem.* 266:20159–20167.
- Fasolato, C., P. Pizzo, and T. Pozzan. 1998. Delayed activation of the store-operated calcium current induced by calreticulin overexpression in RBL-1 cells. *Mol. Biol. Cell.* 9:1513–1522.
- Fries, E., and J.E. Rothman. 1980. Transport of vesicular stomatitis virus glycoprotein in a cell-free extract. *Proc. Natl. Acad. Sci. USA.* 77:3870–3874.
- Furuichi, T., S. Yoshikawa, A. Miyawaki, K. Wada, N. Maeda, and K. Mikoshiba. 1989. Primary structure and functional expression of the inositol 1,4,5-trisphosphate-binding protein P400. *Nature.* 342:32–38.
- Grohovaz, F., M. Bossi, R. Pezzati, J. Meldolesi, and F.T. Tarelli. 1996. High resolution ultrastructural mapping of total calcium: electron spectroscopic imaging/electron energy loss spectroscopy analysis of a physically/chemically processed nerve-muscle preparation. *Proc. Natl. Acad. Sci. USA.* 93:4799–4803.
- Halachmi, D., and Y. Eilam. 1996. Elevated cytosolic free Ca<sup>2+</sup> concentrations and massive Ca<sup>2+</sup> accumulation within vacuoles, in yeast mutant lacking *PMRI*, a homolog of Ca<sup>2+</sup>-ATPase. *FEBS Lett.* 392:194–200.
- Hodson, S. 1978. The ATP-dependent concentration of calcium by a Golgi apparatus-rich fraction isolated from rat liver. *J. Cell Sci.* 30:117–128.
- Hofer, A.M., C. Fasolato, and T. Pozzan. 1998. Capacitative Ca<sup>2+</sup> entry is closely linked to the filling state of internal Ca<sup>2+</sup> stores: a study using simultaneous measurements of I<sub>CRAC</sub> and intraluminal [Ca<sup>2+</sup>]. *J. Cell Biol.* 140:325–334.
- Iredale, P.A., and S.J. Hill. 1993. Increases in intracellular calcium via activation of an endogenous P2-purinoceptor in cultured CHO-K1 cells. *Br. J. Pharmacol.* 110:1305–1310.
- Ivessa, N.E., C. De Lemos-Chiarandini, D. Gravotta, D.D. Sabatini, and G. Kreibich. 1995. The Brefeldin A-induced retrograde transport from the Golgi apparatus to the endoplasmic reticulum depends on calcium sequestered to intracellular stores. *J. Biol. Chem.* 270:25960–25967.
- Jin, M., L. Saucan, M.G. Farquhar, and G.E. Palade. 1996. Rab1a and multiple other Rab proteins are associated with the transcytotic pathway in rat liver. *J. Biol. Chem.* 271:30105–30113.
- Kretsinger, R.H. 1987. Calcium coordination and the calmodulin fold: divergent versus convergent evolution. *Cold Spring Harbor Symp. Quant. Biol.* 52:499–510.
- Lin, P., H. Le-Niculescu, R. Hofmeister, J.M. McCaffery, M. Jin, H. Henne-man, T. McQuistan, L. De Vries, and M. Farquhar. 1998. The mammalian calcium-binding protein, nucleobindin (CALNUC), is a Golgi resident protein. *J. Cell Biol.* 141:1515–1527.
- Llopis, J., J.M. McCaffery, A. Miyawaki, M.G. Farquhar, and R.Y. Tsien. 1998. Measurement of cytosolic, mitochondrial, and Golgi pH in single living cells with green fluorescent proteins. *Proc. Natl. Acad. Sci. USA.* 95:6803–6808.
- MacLennan, D.H., and P.T. Wong. 1971. Isolation of a calcium-sequestering protein from sarcoplasmic reticulum. *Proc. Natl. Acad. Sci. USA.* 68:1231–1235.
- Meldolesi, J., and T. Pozzan. 1998. The endoplasmic reticulum Ca<sup>2+</sup> store: a view from the lumen. *Trends Biochem. Sci.* 23:10–14.
- Mery, L., N. Mesaeli, M. Michalak, M. Opas, D.P. Lew, and K.H. Krause. 1996. Overexpression of calreticulin increases intracellular Ca<sup>2+</sup> storage and decreases store-operated Ca<sup>2+</sup> influx. *J. Biol. Chem.* 271:9332–9339.
- Miura, K., K. Titani, Y. Kurosawa, and Y. Kanai. 1992. Molecular cloning of nucleobindin, a novel DNA-binding protein that contains both a signal peptide and a leucine zipper structure. *Biochem. Biophys. Res. Commun.* 187:375–380.
- Miura, K., Y. Kurosawa, and Y. Kanai. 1994. Calcium-binding activity of nucleobindin mediated by an EF hand moiety. *Biochem. Biophys. Res. Commun.* 199:1388–1393.
- Monkawa, T., A. Miyawaki, T. Sugiyama, H. Yoneshima, M. Yamamoto-Hino, T. Furuichi, T. Saruta, M. Hasegawa, and K. Mikoshiba. 1995. Heterotetrameric complex formation of inositol 1,4,5-trisphosphate receptor subunits. *J. Biol. Chem.* 270:14700–14704.
- Neville, M.C., F. Selker, K. Semple, and C. Watters. 1981. ATP-dependent calcium transport by a Golgi-enriched membrane fraction from mouse mammary gland. *J. Membr. Biol.* 61:97–105.
- O'Connor, S.E. 1992. Recent developments in the classification and functional significance of receptors for ATP and UTP, evidence for nucleotide receptors. *Life Sci.* 50:1657–1664.
- Parekh, A.B., and R. Penner. 1997. Store depletion and calcium influx. *Physiol. Rev.* 77:901–930.
- Pezzati, R., M. Bossi, P. Podini, J. Meldolesi, and F. Grohovaz. 1997. High-resolution calcium mapping of the endoplasmic reticulum-Golgi-exocytic membrane system. Electron energy loss imaging analysis of quick frozen-freeze dried PC12 cells. *Mol. Biol. Cell.* 8:1501–1512.
- Pinton, P., T. Pozzan, and R. Rizzuto. 1998. The Golgi apparatus is an inositol 1,4,5-trisphosphate-sensitive Ca<sup>2+</sup> store, with functional properties distinct from those of the endoplasmic reticulum. *EMBO (Eur. Mol. Biol. Organ.) J.* 17:5298–5308.
- Pizzo, P., C. Fasolato, and T. Pozzan. 1997. Dynamic properties of an inositol 1,4,5-trisphosphate- and thapsigargin-insensitive calcium pool in mammalian cell lines. *J. Cell Biol.* 136:355–366.
- Randriamampita, C., and R.Y. Tsien. 1993. Emptying of intracellular Ca<sup>2+</sup> stores releases a novel small messenger that stimulates Ca<sup>2+</sup> influx. *Nature.* 364:809–814.
- Saucan, L., and G.E. Palade. 1994. Membrane and secretory proteins are transported from the Golgi complex to the sinusoidal plasmalemma of hepatocytes by distinct vesicular carriers. *J. Cell Biol.* 125:733–741.
- Scherer, P.E., G.Z. Lederkremer, S. Williams, M. Fogliano, G. Baldini, and H.F. Lodish. 1996. Cab45, a novel Ca<sup>2+</sup>-binding protein localized to the Golgi lumen. *J. Cell Biol.* 133:257–268.
- Sorin, A., G. Rosas, and R. Rao. 1997. *PMRI*, a Ca<sup>2+</sup>-ATPase in yeast Golgi, has properties distinct from sarco/endoplasmic reticulum and plasma membrane calcium pumps. *J. Biol. Chem.* 272:9895–9901.
- Taylor, R.S., S.M. Jones, R.H. Dahl, M.H. Nordeen, and K.E. Howell. 1997. Characterization of the Golgi complex cleared of proteins in transit and examination of calcium uptake activities. *Mol. Biol. Cell.* 8:1911–1931.
- Thastrup, O., P.J. Cullen, B.K. Drobak, M.R. Hanley, and A.P. Dawson. 1990. Thapsigargin, a tumor promoter, discharges intracellular Ca<sup>2+</sup> stores by specific inhibition of the endoplasmic reticulum Ca<sup>2+</sup>-ATPase. *Proc. Natl. Acad. Sci. USA.* 87:2466–2470.
- Thielens, N.M., A. Van Dorsselaer, J. Gagnon, and G.J. Arlaud. 1990. Chemical and functional characterization of a fragment of C1-s containing the epidermal growth factor homology region. *Biochemistry.* 29:3570–3578.
- Tsien, R.W., and R.Y. Tsien. 1990. Calcium channels, stores, and oscillations. *Annu. Rev. Cell Biol.* 6:715–760.
- Tsien, R.Y., and T. Pozzan. 1989. Measurement of cytosolic free Ca<sup>2+</sup> with Quin2. *Methods Enzymol.* 172:230–262.
- Velasco, A., L. Hendricks, K.W. Moremen, D.R. Tulsiani, O. Touster, and M.G. Farquhar. 1993. Cell type-dependent variations in the subcellular distribution of  $\alpha$ -mannosidase I and II. *J. Cell Biol.* 122:39–51.
- Virk, S.S., C.J. Kirk, and S.B. Shears. 1985. Ca<sup>2+</sup> transport and Ca<sup>2+</sup>-dependent ATP hydrolysis by Golgi vesicles from lactating rat mammary glands. *Biochem. J.* 226:741–748.
- Wendel, M., Y. Sommarin, T. Bergman, and D. Heinegard. 1995. Isolation, characterization, and primary structure of a calcium-binding 63-kD bone protein. *J. Biol. Chem.* 270:6125–6133.
- Yao, Y., and R.Y. Tsien. 1997. Calcium current activated by depletion of calcium stores in *Xenopus* oocytes. *J. Gen. Physiol.* 109:703–715.
- Zha, X., and G.H. Morrison. 1995. Ion microscopy evidence that La<sup>3+</sup> releases Ca<sup>2+</sup> from Golgi complex in LLC-PK1 cells. *Am. J. Physiol.* 269:C923–C928.